

**Trust
Learning
Innovation**





20th Apr 2026 to 3rd July 2026



Welcome To Wesley Mission Technologies Smartphones Term 2 2026

JOE STAFRACE
WWW.STAFRACEMMC.COM
Joe.Stafrace@gmail.com
0497 093 465



WIFI Password

Go to your Settings

Locate WiFi



Choose Network **WM_Guest**

Enter Password as shown below

ST@ngryBr!an7#

SMART TECHNOLOGIES CLASSES

10:00 TO 11:30
SMART PHONES



11:35 TO 1:00
COMPUTERS/TABLETS
TECHNOLOGIES





TERM 1 CLASSES

Apr 21

Apr 28

May 5

May 12

May 19

May 26

Jun 2

Jun 9

Jun 16

Jun 23

Jun 30



Some topics in this course may feel familiar to those who have attended previous classes. However, since technology continues to evolve at a rapid pace, revisiting the basics ensures that everyone stays up to date and confident with the latest tools and features

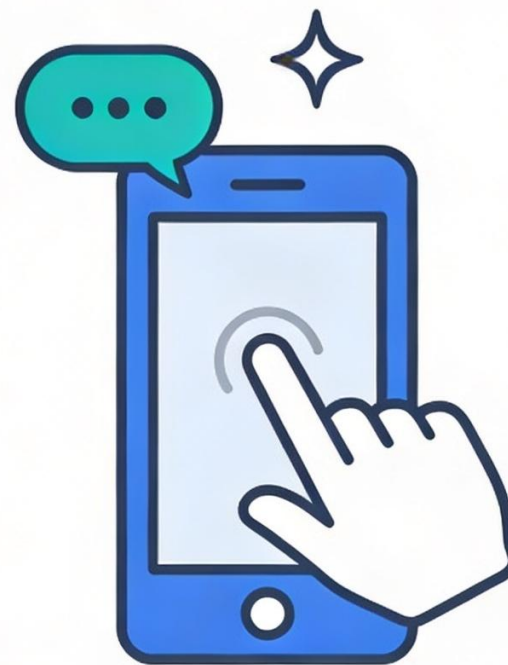


Do you
have any
questions?



- **“Your questions are important — we’re here to answer them.”**





Smartphone Basics

—

Samsung users HAVE YOU OPTIMIZED YOUR SMARTPHONE?



Smartphones to avoid

Motorola Moto G04
Price (RRP): \$179

Nokia G22
Price (RRP): \$299

Nokia G42 5G
Price (RRP): \$449

Motorola Moto G24
Price (RRP): \$229

Smartphones to avoid



Motorola Moto G04

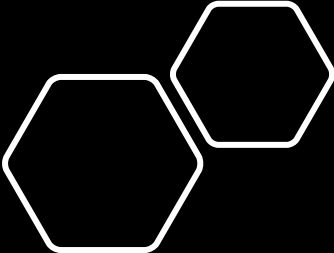


Nokia G22



Nokia G42 5G

Price (RRP)	\$179	\$299	\$449
CHOICE Expert Rating	49%	53%	58%
Camera quality score	41%	43%	52%
Battery life score	55%	58%	58%
Performance score	38%	41%	50%
Display score	41%	55%	56%
Battery life (hh:mm)	33:00	34:00	35:30



Tech News

A graphic featuring a radio tower silhouette on a hill with signal waves, positioned between the words 'Tech' and 'News'.



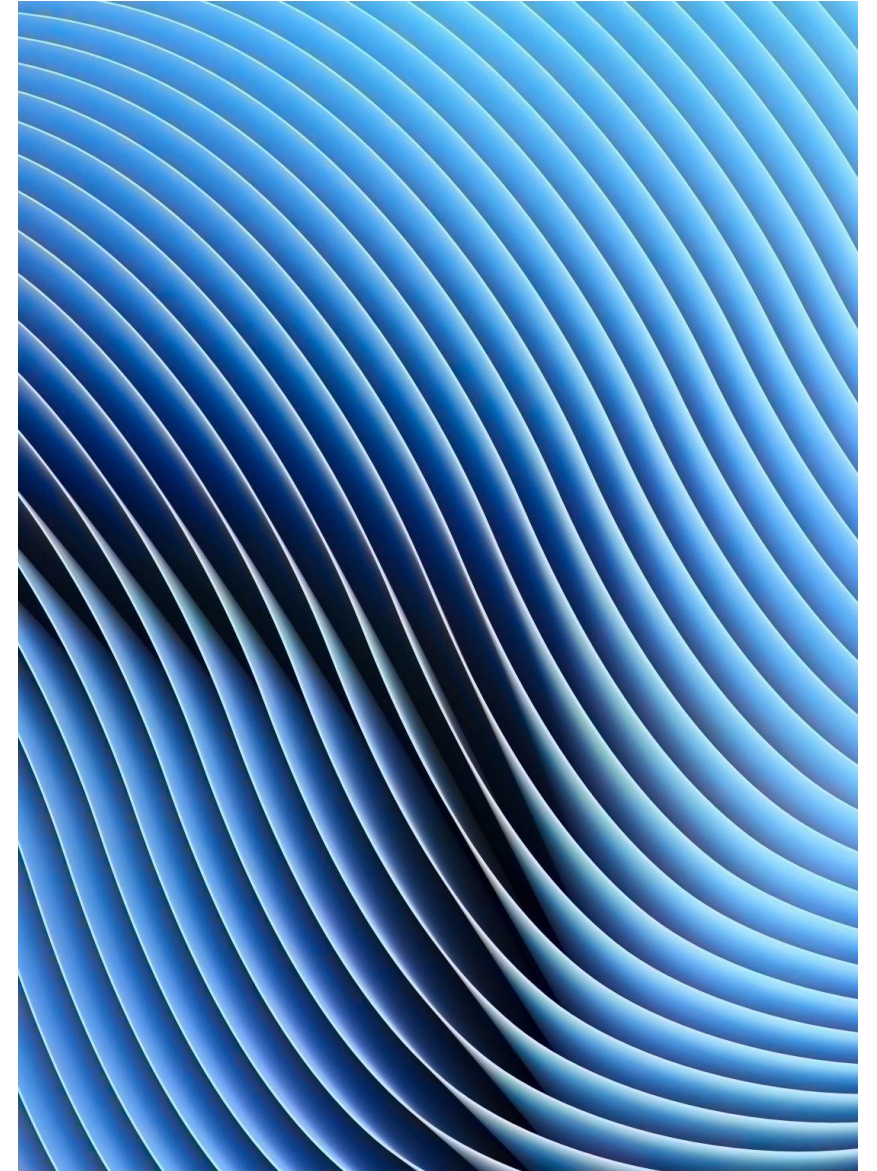
206.4.2

01

Apple released iOS 26.4.2 as the second mid-release update for iOS 26.4, addressing unspecified bugs and security vulnerabilities.

02

The update fixes a critical Notification Services vulnerability (CVE-2026-28950) and resolves a logging issue affecting iPhones.









iOS 27 may not support iPhone 11, 2nd-gen iPhone SE

Apple's seven-year rule applies with these iPhone models.

The iPhone 12 can still be used; the following models will support the iOS 27 upgrade:

iPhone 17e,

iPhone 17,

iPhone 17 Pro,

iPhone 17 Pro Max,

iPhone Air,

iPhone 16e

, iPhone 16 , iPhone 16

Plus , iPhone 16 Pro, iPhone 16 Pro Max , iPhone 15, iPhone 15 Plus, iPhone 15

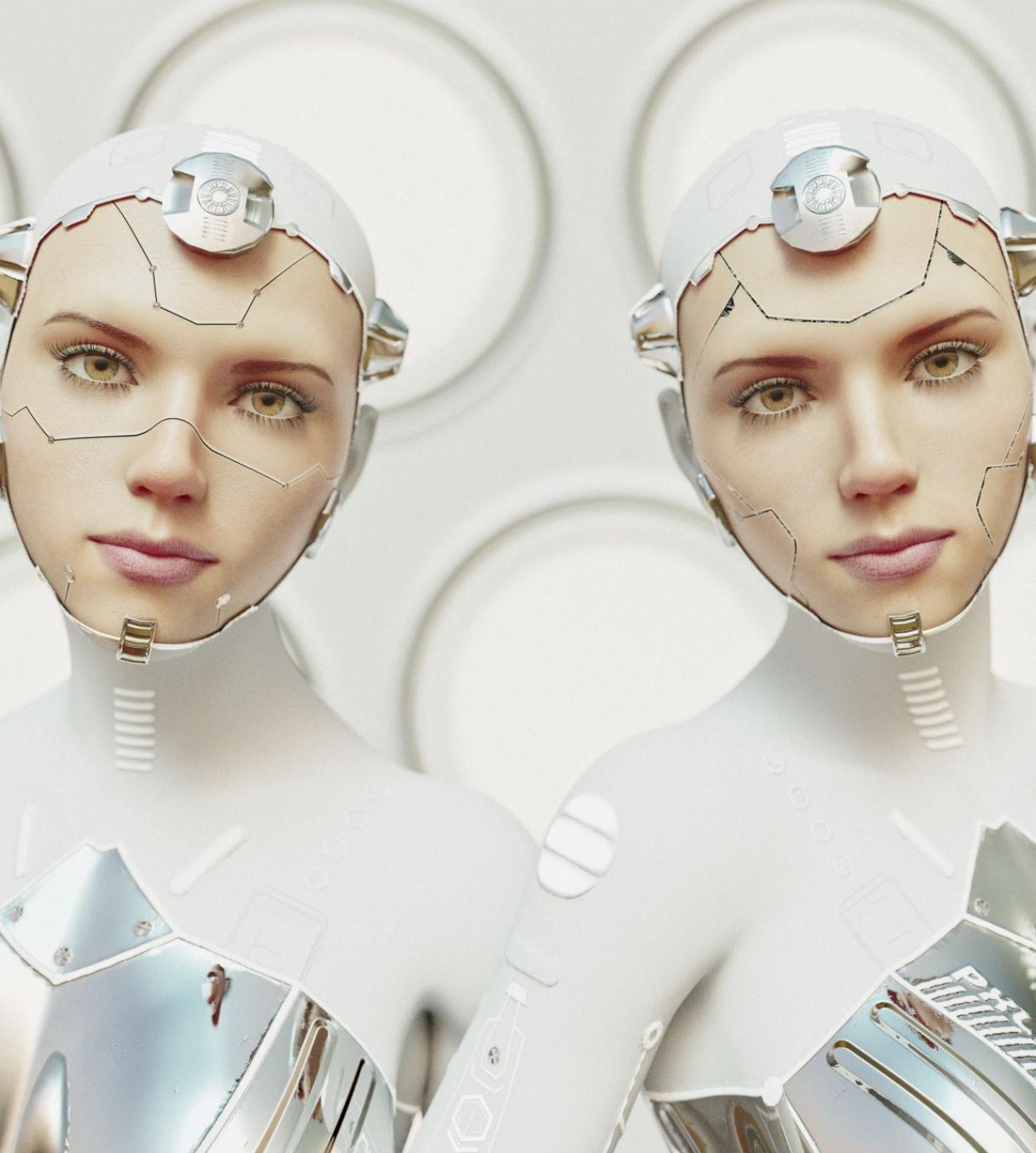
Pro , iPhone 15 Pro Max , iPhone 14 , iPhone 14 Plus, iPhone 14 Pro, iPhone 14

Pro Max, iPhone 13 , iPhone 13 mini , iPhone 13 Pro , iPhone 13 Pro Max, iPhone

12, iPhone 12 mini, iPhone 12 Pro, iPhone 12 Pro Max , iPhone SE 3



AI is a gold mine for spammers and scammers



- 5 AI Models Tried to Scam Me. Some of Them Were Scary Good

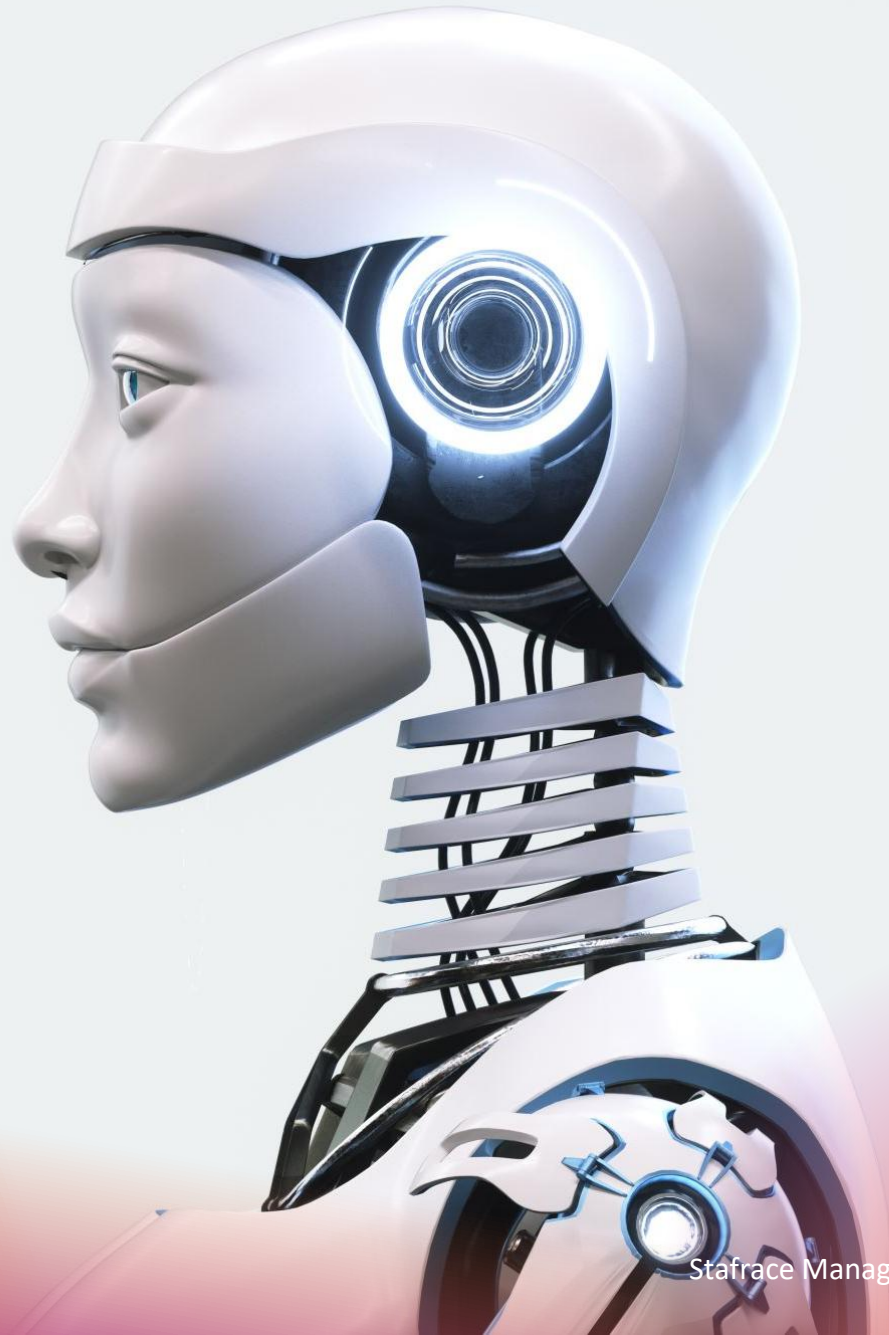
FaceTime on Android





- FaceTime doesn't have a native Android app, but Android users can join a FaceTime call in a web browser if an Apple user sends them a FaceTime link. The Android user can't start a FaceTime call themselves.





- Physical Intelligence, a hot robotics startup, says its new robot brain can figure out tasks it was never taught

- Here's when your Samsung Galaxy will get Android 17 (One UI 9)





How-To Geek



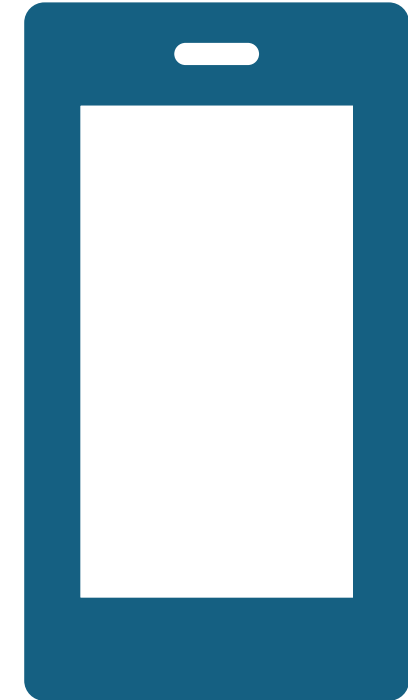
- **Here's a list of all the Samsung Galaxy devices we anticipate will receive the latest Android 17 software, known as One UI 9.**

- **Galaxy Phones:**

- Galaxy S26, Galaxy S26 Plus, and Galaxy S26 Ultra
- Galaxy Z Fold 7, Galaxy Z Flip 7, Flip 7 FE, Galaxy Z TriFold
- Galaxy S25, Galaxy S25 Plus, Galaxy S25 Edge, FE, and Galaxy S25 Ultra
- Galaxy Z Fold 6 and Galaxy Z Flip 6
- Galaxy S24, Galaxy S24 Plus, FE, and Galaxy S24 Ultra
- Galaxy Z Fold 5 and Galaxy Z Flip 5
- Galaxy S23, Galaxy S23 Plus, FE, and Galaxy S23 Ultra
- Galaxy A15 5G, A16 LTE, A16 5G, A17 5G, A17 LTE, A24 LTE, A25 5G, A26 5G, A34 5G, A36 5G, A37 5G, A54 5G, A55 5G, A56 5G, A57 5G, etc.



- Most Samsung Galaxy phones and tablets that received the One UI 8 update earlier this year should be eligible for 9.0 when it arrives later this year or in early 2027





Satellite Messaging

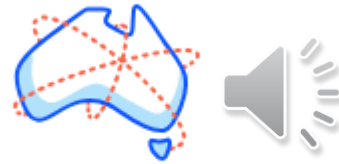
Connect in more places

Satellite-to-mobile technology allows text messages to be sent and received when outside the range of our mobile network. Available in most outdoor areas in Australia. Eligible plan and compatible mobile required.



Connects automatically

Eligible customers don't need to switch anything on. Compatible devices will automatically seek a Starlink Direct to Cell satellite connection once beyond the range of our mobile network and when located outdoors with a clear line of sight to the sky.



Coverage beyond the mobile network

Satellite-to-mobile technology complements Telstra mobile services by supporting Satellite Messaging in most parts of mainland Australia.



Uses phone's text app

The service can send and receive texts via the phone's text app when connected to a Starlink Direct to Cell satellite. This may take longer than when connected to the Telstra Mobile Network, depending on location, device and satellite position.

Phones compatible with Telstra Satellite Messaging

Phones on the following list which have been purchased through Telstra are ready for Telstra Satellite Messaging. Compatibility for BYO devices may vary. Make sure you have the latest software.

Brand	Model
Apple	<ul style="list-style-type: none">• iPhone 17 range: iPhone 17 (A3520), iPhone Air (A3517), iPhone 17 Pro (A3523), iPhone 17 Pro Max (A3526)• iPhone 16 range: iPhone 16 (A3287), iPhone 16 Plus (A3290), iPhone 16 Pro (A3293), iPhone 16 Pro Max (A3296), iPhone 16e (A3409)• iPhone 15 range: iPhone 15 (A3090), iPhone 15 Plus (A3094), iPhone 15 Pro (A3102), iPhone 15 Pro Max (A3106)• iPhone 14 range: iPhone 14 (A2882), iPhone 14 Plus (A2886), iPhone 14 Pro (A2890), iPhone 14 Pro Max (A2894)• iPhone 13 range: iPhone 13 mini (A2628), iPhone 13 (A2633), iPhone 13 Pro (A2638), iPhone 13 Pro Max (A2643)

Samsung

- **S26 Range:** Galaxy S26 (SM-S942B), Galaxy S26+ (SM-S947B), Galaxy S26 Ultra(SM-S948B)
- **S25 range:** Galaxy S25 FE (SM-S731B), Samsung Galaxy S25 (SM-S931B), Galaxy S25+ (SM-S936B), Galaxy S25 Ultra (SM-S938B), Galaxy S25 Edge (SM-S937B).
- **S24 range:** Samsung Galaxy S24 (SM-S921B), Samsung Galaxy S24+ (SM-S926B), Samsung Galaxy S24 Ultra (SM-S928B), Samsung Galaxy S24 FE (SM-S721B).
- **Galaxy A Series range:** Galaxy A37 5G (SM-A376B), Galaxy A57 5G (SM-A576B), Samsung Galaxy A56 5G (SM-A566B), Galaxy A36 5G (SM-A366B), Samsung Galaxy A17 5G (SM-A176B).
- **Galaxy X Series range:** Samsung XCover7 Pro (SM-G766B).
- **Galaxy Z Series range:** Samsung Galaxy Z Fold7 (SM-F966B), Samsung Galaxy Z Flip7 (SM-F766B), Galaxy Flip 6 (SM-F741B), Galaxy Fold 6 (SM-F956B).

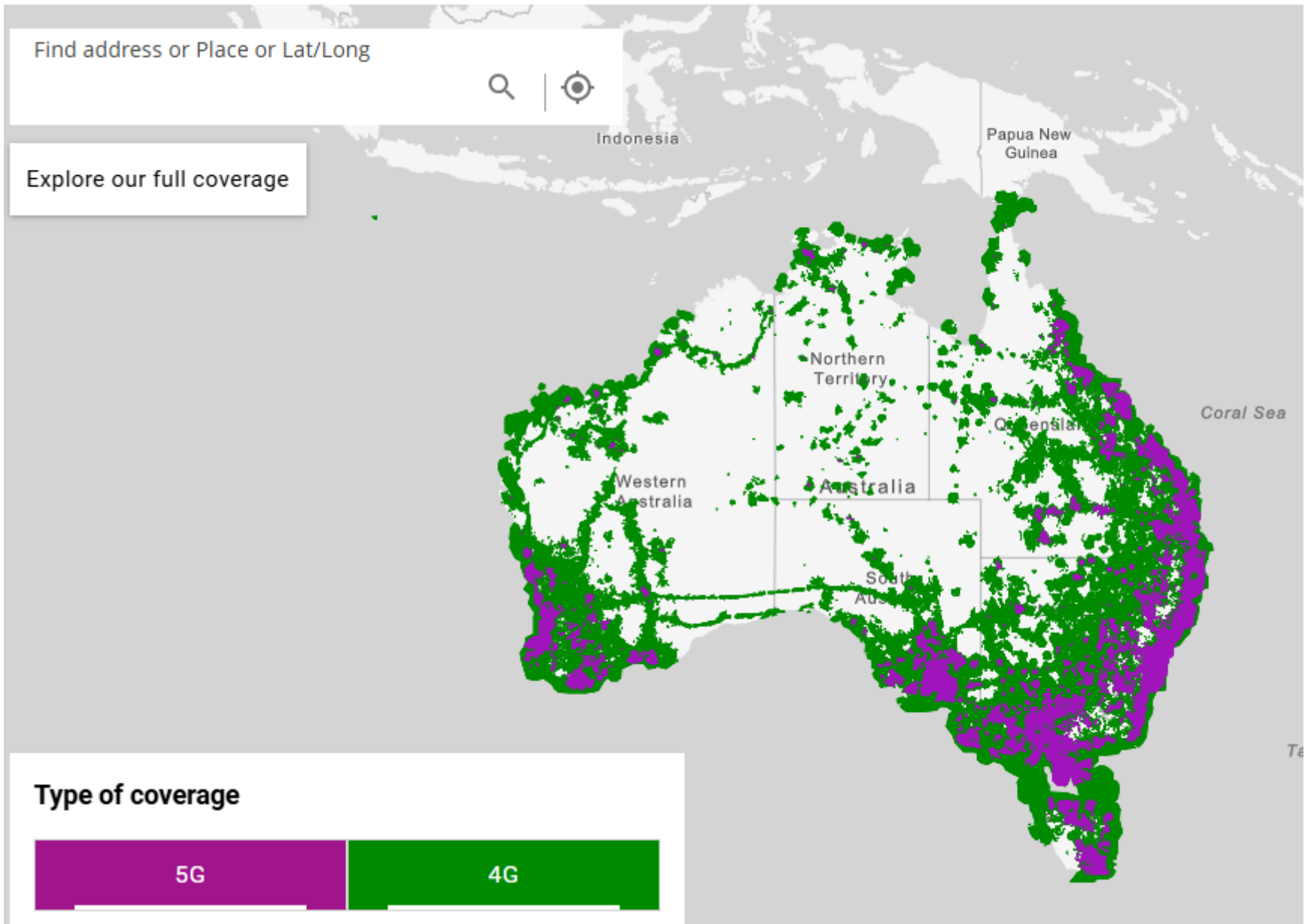
How to find your phone model

iPhone: Go to settings > General > About. Then tap the model number to reveal your "A" number

Samsung: Go to settings > About phone > Model name.



-
- How to use Telstra Satellite Messaging



①

Check you're satellite-ready

You need a compatible phone with the latest software and a Telstra Upfront Mobile Plan. Check before you leave the Telstra Mobile Network area.

②

Go outside and look up

When beyond the range of the Telstra Mobile Network, make sure you have a clear line of sight to the sky. Your view must not be obstructed by things like buildings or vegetation.

③

Look for 'Telstra SpaceX' on your phone

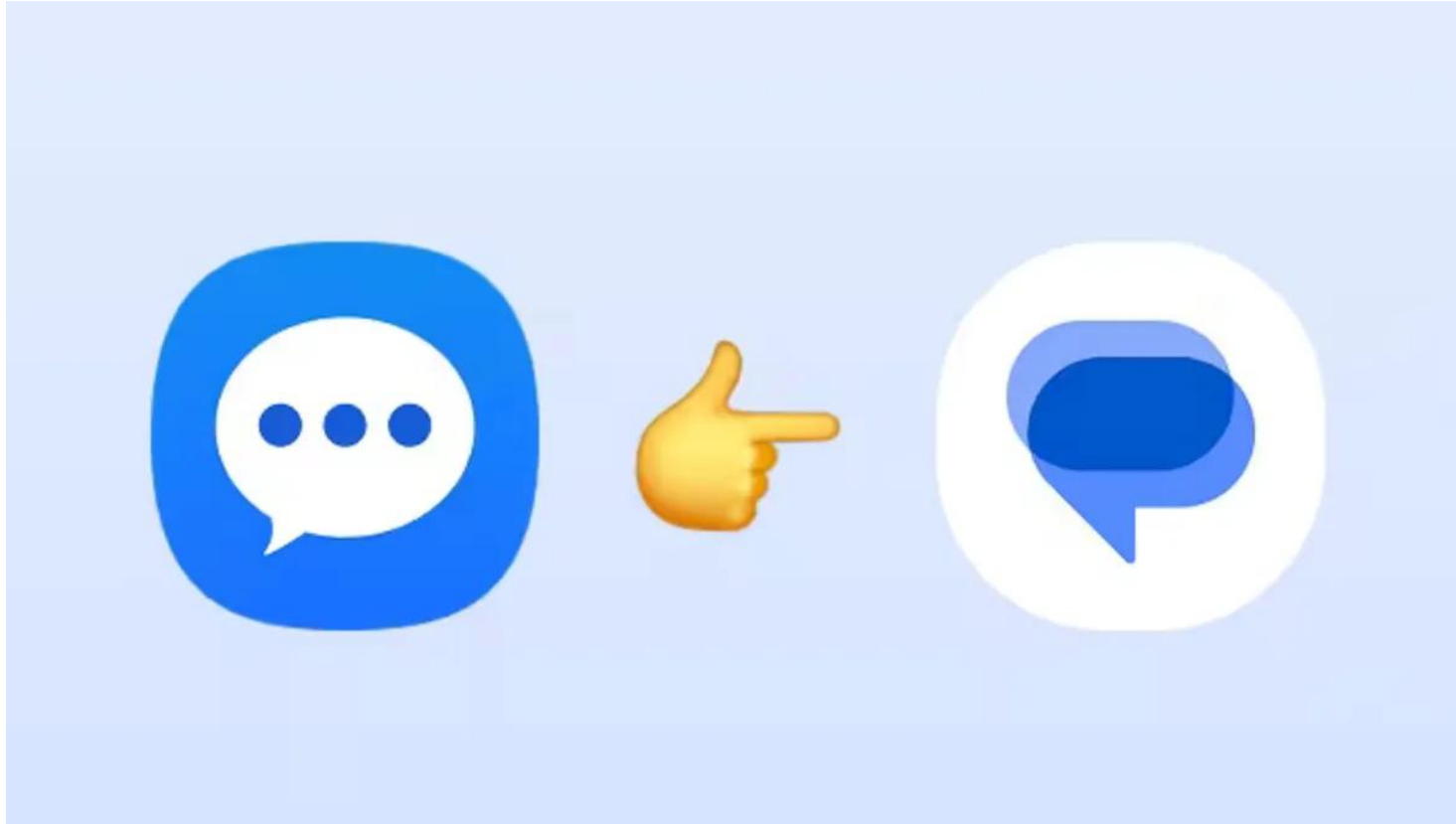
In most parts of Australia, a compatible phone will automatically seek a satellite connection once beyond the range of our mobile network. When the phone is connected to a satellite, it will display 'Telstra SpaceX' on the network banner.

④

Send your text

Now you're ready to send and receive satellite text messages to standard Australian and international numbers.

Don't Lose Your Texts: How to Move Away From Samsung Messages Before It Shuts Down



Samsung is closing the book on its proprietary texting platform this summer.

To switch to Google Messages, the company asks users to [download the app](#) if it's not already installed and to set it as the default SMS app when prompted after launching it.

A hand in a white glove holds a smartphone. The screen displays the Booking.com logo. The background is a solid blue color with a large, semi-transparent red warning triangle overlaid on the left side.

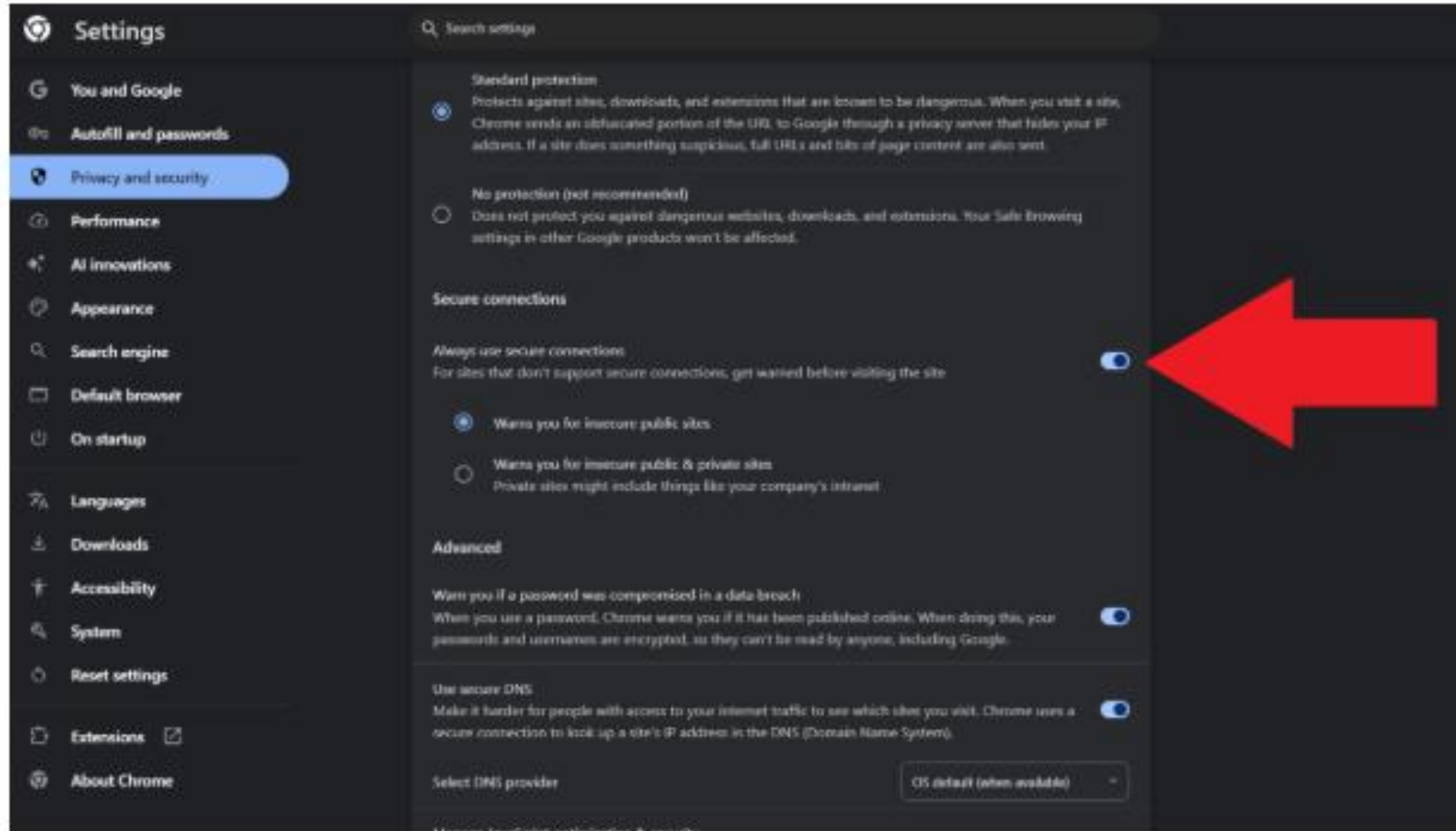
Booking.com

- Booking.com is warning customers that their personal data, as well as upcoming travel details, have been exposed after hackers infiltrated the company's networks earlier this month – with dozens of customers already reporting fake emails and WhatsApp messages claiming to be from the booking site. Reports of phishing messages tied to those reservations continue to surface online.

```
mirror_mod = modifier_ob.  
#set mirror object to mirror.  
mirror_mod.mirror_object  
operation == "MIRROR_X":  
mirror_mod.use_x = True  
mirror_mod.use_y = False  
mirror_mod.use_z = False  
operation == "MIRROR_Y":  
mirror_mod.use_x = False  
mirror_mod.use_y = True  
mirror_mod.use_z = False  
operation == "MIRROR_Z":  
mirror_mod.use_x = False  
mirror_mod.use_y = False  
mirror_mod.use_z = True  
  
#selection at the end -add  
mirror_ob.select= 1  
modifier_ob.select=1  
context.scene.objects.active  
("Selected" + str(modifier_ob.  
mirror_ob.select = 0  
= bpy.context.selected_obj  
data.objects[one.name].select  
  
print("please select exactly  
  
-- OPERATOR CLASSES -----  
  
types.Operator):  
on X mirror to the selected  
object.mirror_mirror_x"  
mirror X"  
  
context):  
context.active_object is not
```

- One simple browser setting can help block shady websites

In Chrome:



-
- Click on the three-dot menu at the upper right
 - Select Settings
 - In the left-hand menu, click Privacy & security
 - Choose Security
 - Under “Secure Connections,” choose Always use secure connections
 - You can choose between two variations of this mode. The default (“Warns you for insecure public sites”) should be sufficient for most users, and it avoids the hassle of seeing warnings when accessing devices within your home network, like a router administration page.

 - But if you like to know what’s going on at all times, you can switch to “Warns you for insecure public & private sites.”

In Edge:

The image shows the Microsoft Edge Settings application. The left sidebar contains the following categories: Profiles, Passwords and autofill, Privacy, search, and services (highlighted), Appearance, Default browser, Start, home, and new tab page, Languages, Downloads, Accessibility, System and performance, Reset settings, Extensions (indicated by a red arrow), AI innovations, and About Microsoft Edge. The main content area is titled 'Privacy, search, and services / Security' and includes the following settings:

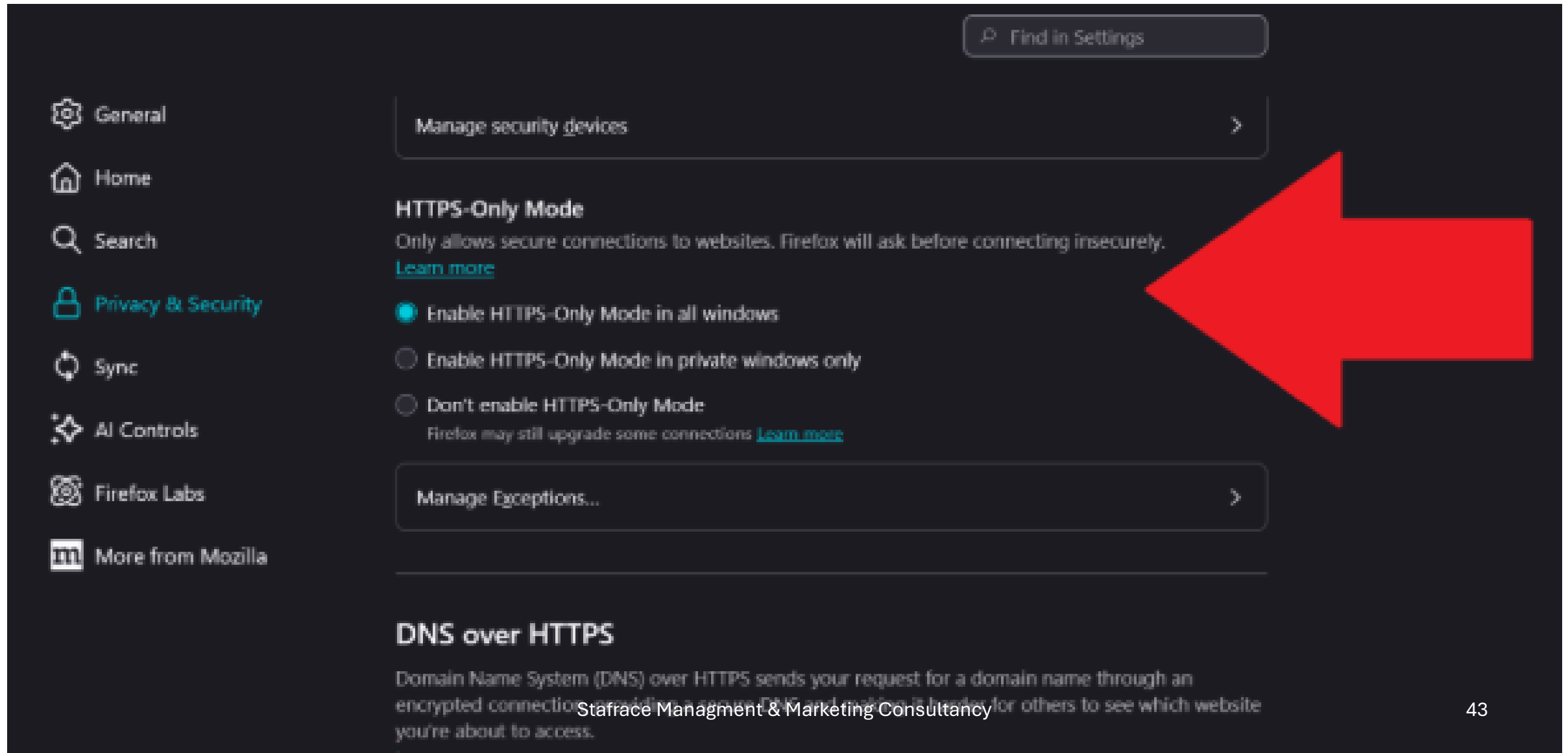
- Manage certificates: Manage HTTPS/SSL certificates and settings.
- Protect from harmful sites and downloads: Uses Microsoft Defender SmartScreen.
- Block potentially unwanted apps: Blocks downloads of low-reputation apps that might cause unexpected behaviors.
- Website type protection: Alerts you when a site address is mistyped to prevent visits to potentially harmful sites.
- Clear all previously allowed sites: Clear
- Automatically switch to more secure connections with Automatic HTTPS: Using HTTPS can help keep your personal info more secure.
- Scamware blocker: Allow Microsoft to use AI to detect potential tech scams.
- Block sites detected as scams:
- Share detected scam sites with Microsoft Defender SmartScreen:
- Use secure DNS: Specifies how to look up the network address for websites.
- Enhance your security on the web: Protects your browser from malware by blocking security threats.
- Use Microsoft Edge security network: Built-in VPN that protects against online trackers. You get 5GB of free VPN per month.

```
mirror_mod = modifier_ob.
set mirror object to mirror
mirror_mod.mirror_object
operation == "MIRROR_X":
mirror_mod.use_x = True
mirror_mod.use_y = False
mirror_mod.use_z = False
operation == "MIRROR_Y":
mirror_mod.use_x = False
mirror_mod.use_y = True
mirror_mod.use_z = False
operation == "MIRROR_Z":
mirror_mod.use_x = False
mirror_mod.use_y = False
mirror_mod.use_z = True

selection at the end -add
mirror_ob.select= 1
modifier_ob.select=1
context.scene.objects.active
("Selected" + str(modifier_ob
mirror_ob.select = 0
= bpy.context.selected_object
data.objects[one.name].select
print("please select exactly
OPERATOR CLASSES -----
types.Operator):
on X mirror to the selected
object.mirror_mirror_x"
mirror X"
context):
context.active_object is not
```

-
- Click on the three-dot menu at the upper right
 - Choose Settings
 - Search for “HTTPS” in the search bar in the upper right
 - Find the result that says Automatically switch to more secure connections with Automatic HTTPS
 - Click the toggle to enable the feature
 - Another way to find this feature: When in Settings, click on the three-line menu in the upper left and choose Privacy, search, and services then click on Security.

In Firefox:



Find in Settings

- General
- Home
- Search
- Privacy & Security**
- Sync
- AI Controls
- Firefox Labs
- More from Mozilla

Manage security devices >

HTTPS-Only Mode

Only allows secure connections to websites. Firefox will ask before connecting insecurely.
[Learn more](#)

- Enable HTTPS-Only Mode in all windows
- Enable HTTPS-Only Mode in private windows only
- Don't enable HTTPS-Only Mode
Firefox may still upgrade some connections [Learn more](#)

Manage Exceptions... >

DNS over HTTPS

Domain Name System (DNS) over HTTPS sends your request for a domain name through an encrypted connection, avoiding a rogue DNS and making it harder for others to see which website you're about to access.

- Click on the three-line (“hamburger”) menu in the upper right
- Select Settings
- Click on Privacy & Security
- Scroll all the way down (almost to the end) and find HTTPS-Only Mode
- Choose Enable HTTPS-Only Mode in all windows
- You can choose to step down the level of security to Enable HTTPS-Only Mode in private windows only, but most people will get a bigger benefit to having this setting enabled for all windows. You’ll still be able to visit insecure sites if you must (e.g., a management page for a device within your home network).

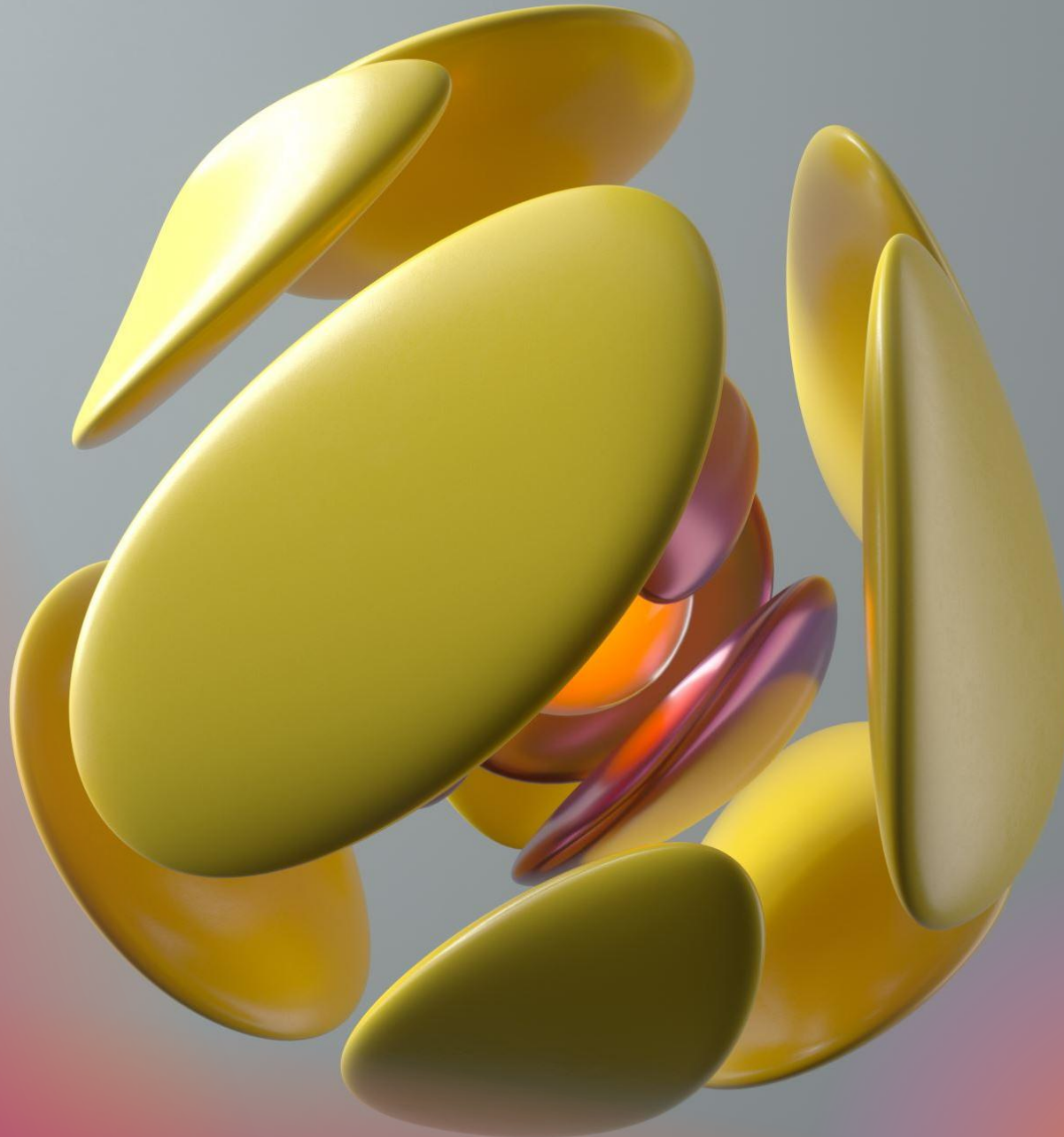




- Apple’s release notes for iOS 26.4 are as follows:



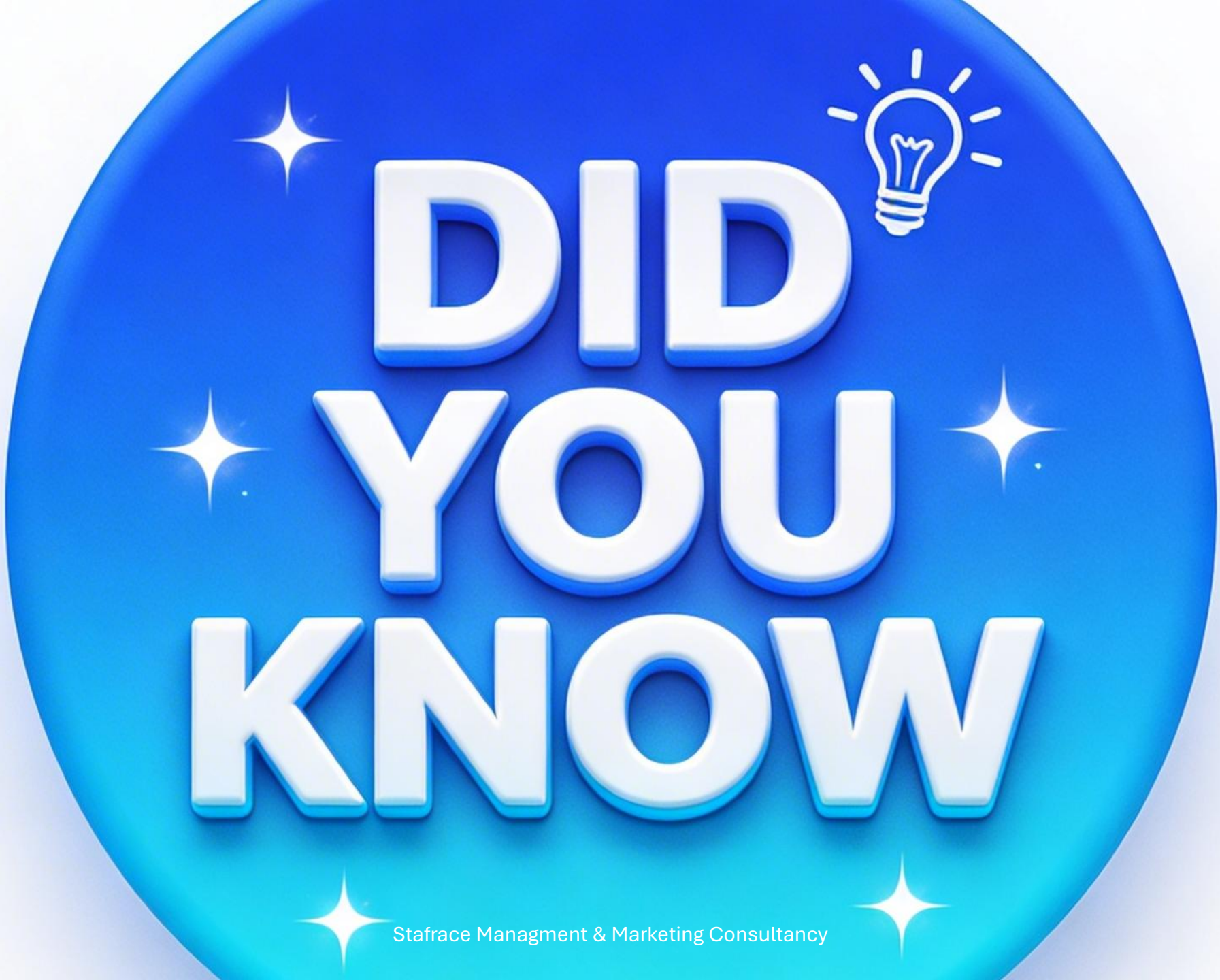
- **Apple Music**
 - Playlist Playground (beta) generates a playlist from your description, complete with a title, description, and tracklist
 - Concerts helps you discover nearby shows from artists in your library and recommends new artists based on what you listen to
 - Offline Music Recognition in Control Center identifies songs without an internet connection and delivers results automatically when you’re back online
 - Ambient Music widget for Sleep, Chill, Productivity, and Wellbeing brings curated playlists to the Home Screen
 - Full screen backgrounds give album and playlist pages a more immersive look



- **Accessibility**
 - Reduce bright effects setting minimizes bright flashes when tapping on elements like buttons
 - Subtitle and caption settings are available from the captions icon while viewing media, making them easier to find, customize, and preview
 - Reduce Motion setting more reliably reduces the animations of Liquid Glass for users sensitive to on screen motion



- **This update also includes the following enhancements:**
 - 8 new emoji including an orca, trombone, landslide, ballet dancer, and distorted face are available in the emoji keyboard
 - Freeform gains advanced image creation and editing tools, and a premium content library, joining Apple Creator Studio
 - Mark reminders as urgent from the Quick Toolbar or by touching and holding, and filter for urgent reminders in your Smart Lists
 - Purchase Sharing lets adult members in Family Sharing groups use their own payment method when making purchases, without relying on the family organizer
 - Improved keyboard accuracy when typing quickly

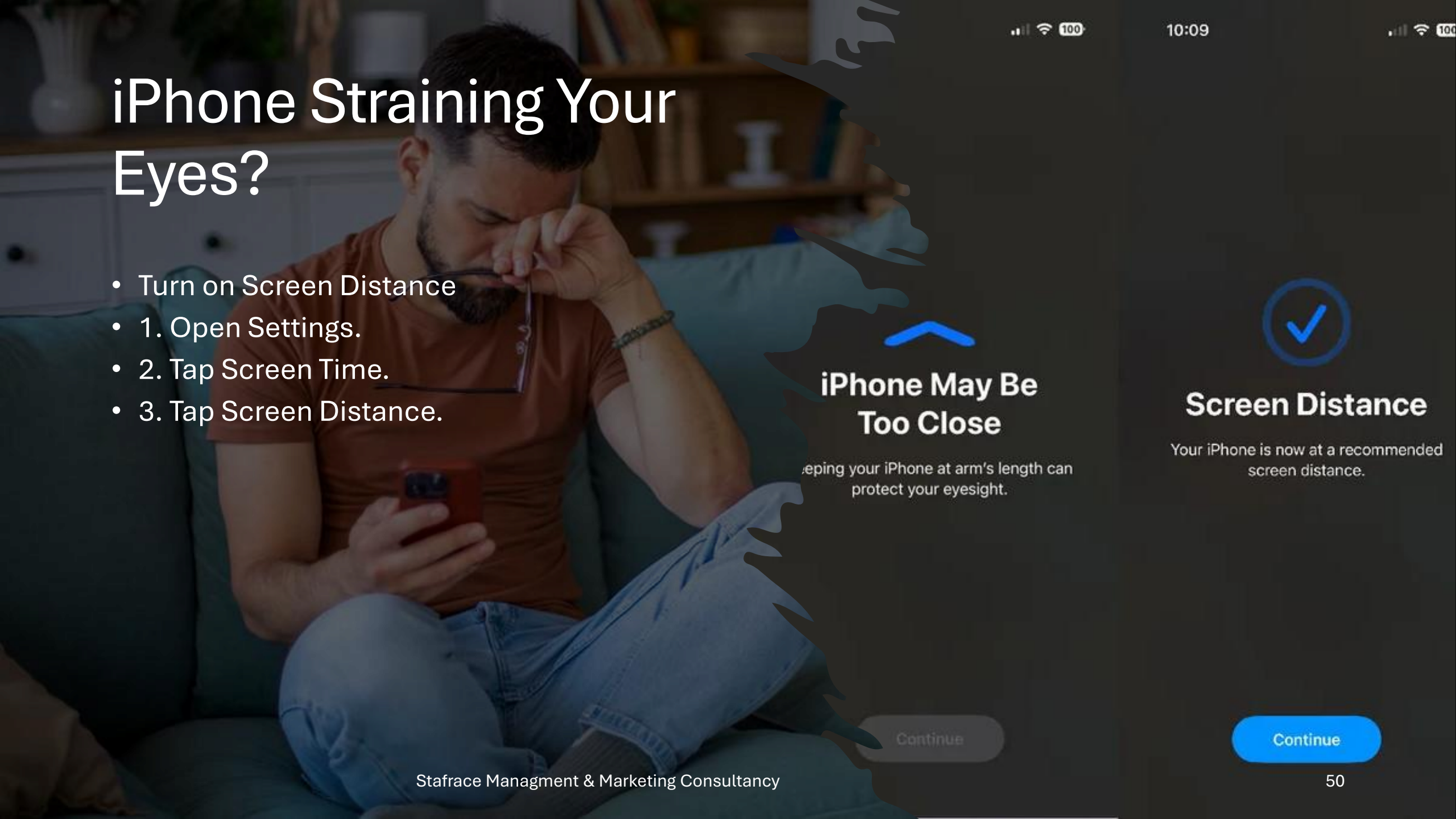


**DID
YOU
KNOW**

Stafrace Managment & Marketing Consultancy

iPhone Straining Your Eyes?

- Turn on Screen Distance
- 1. Open Settings.
- 2. Tap Screen Time.
- 3. Tap Screen Distance.



iPhone May Be Too Close

Keeping your iPhone at arm's length can protect your eyesight.

Continue



Screen Distance

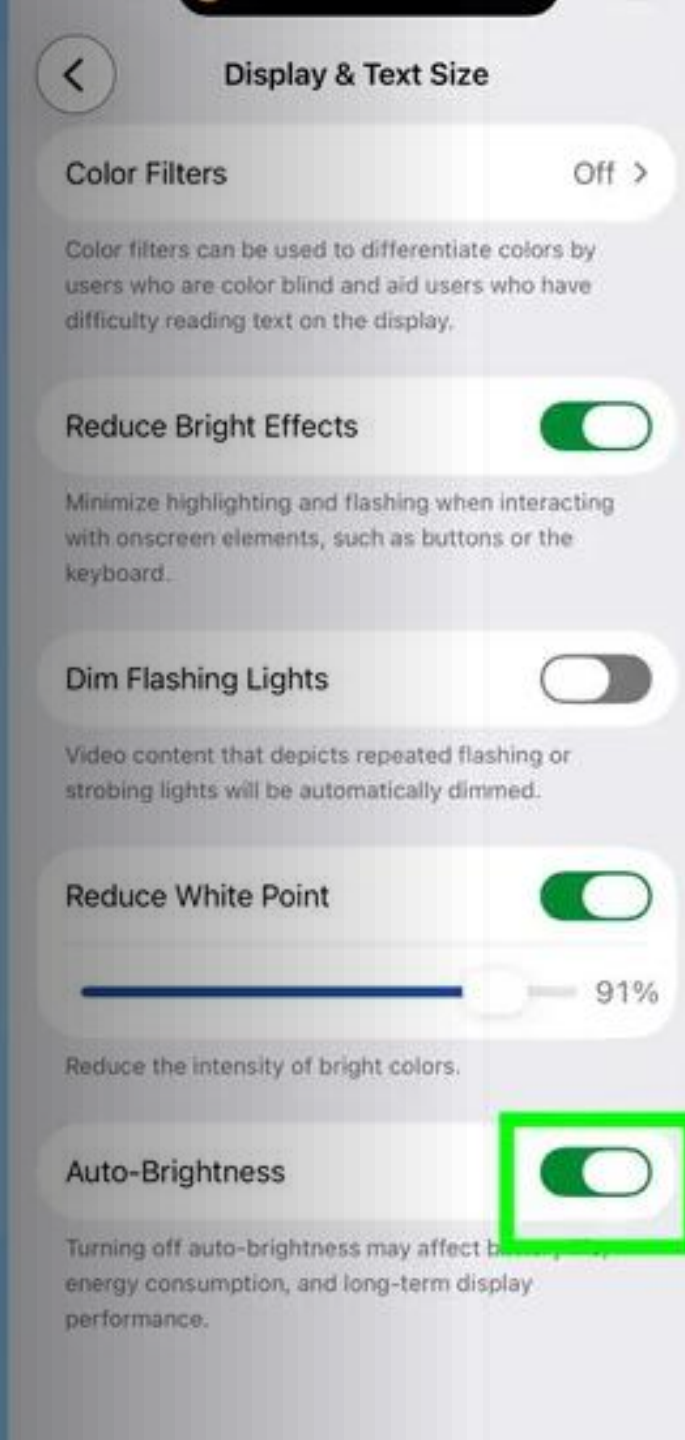
Your iPhone is now at a recommended screen distance.

Continue

iPhone settings to change right now for longer battery life



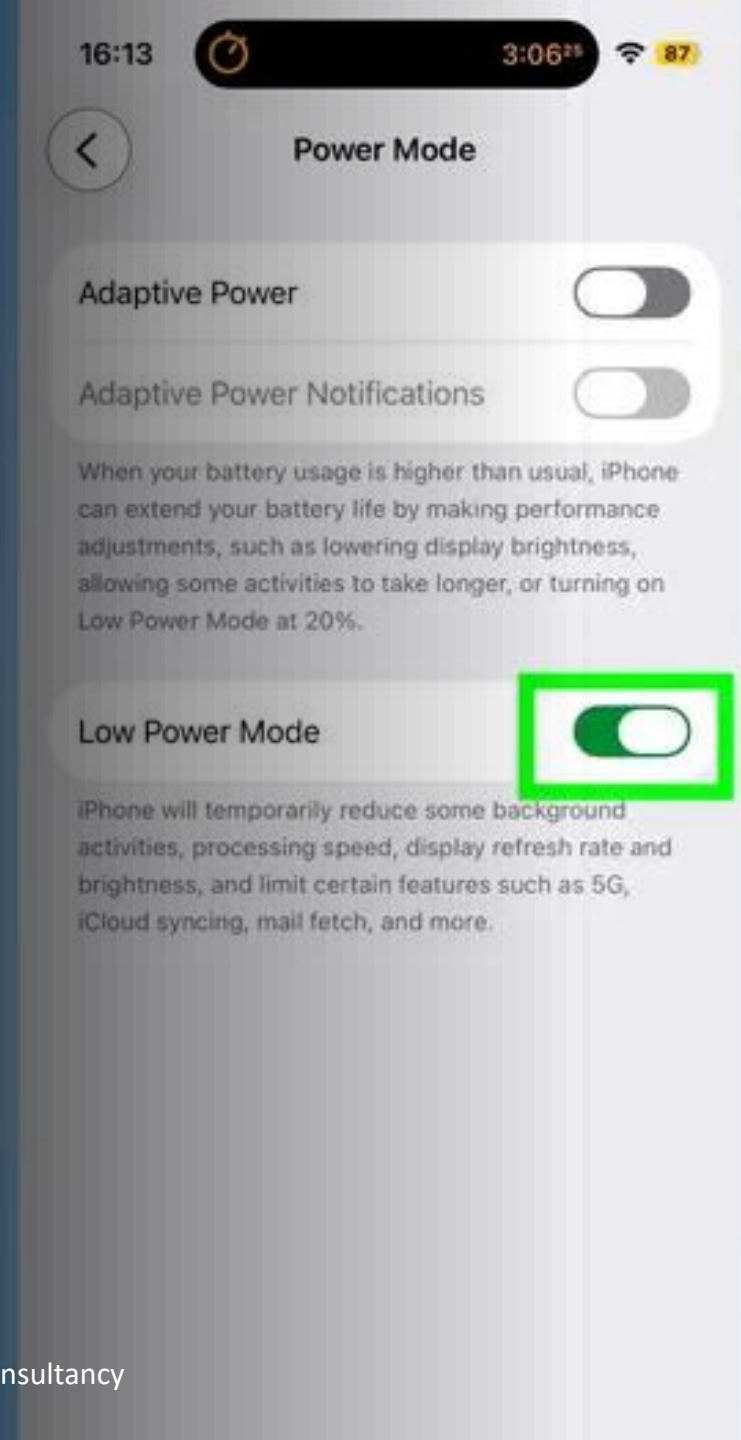
1. Lower screen brightness and enable auto-brightness



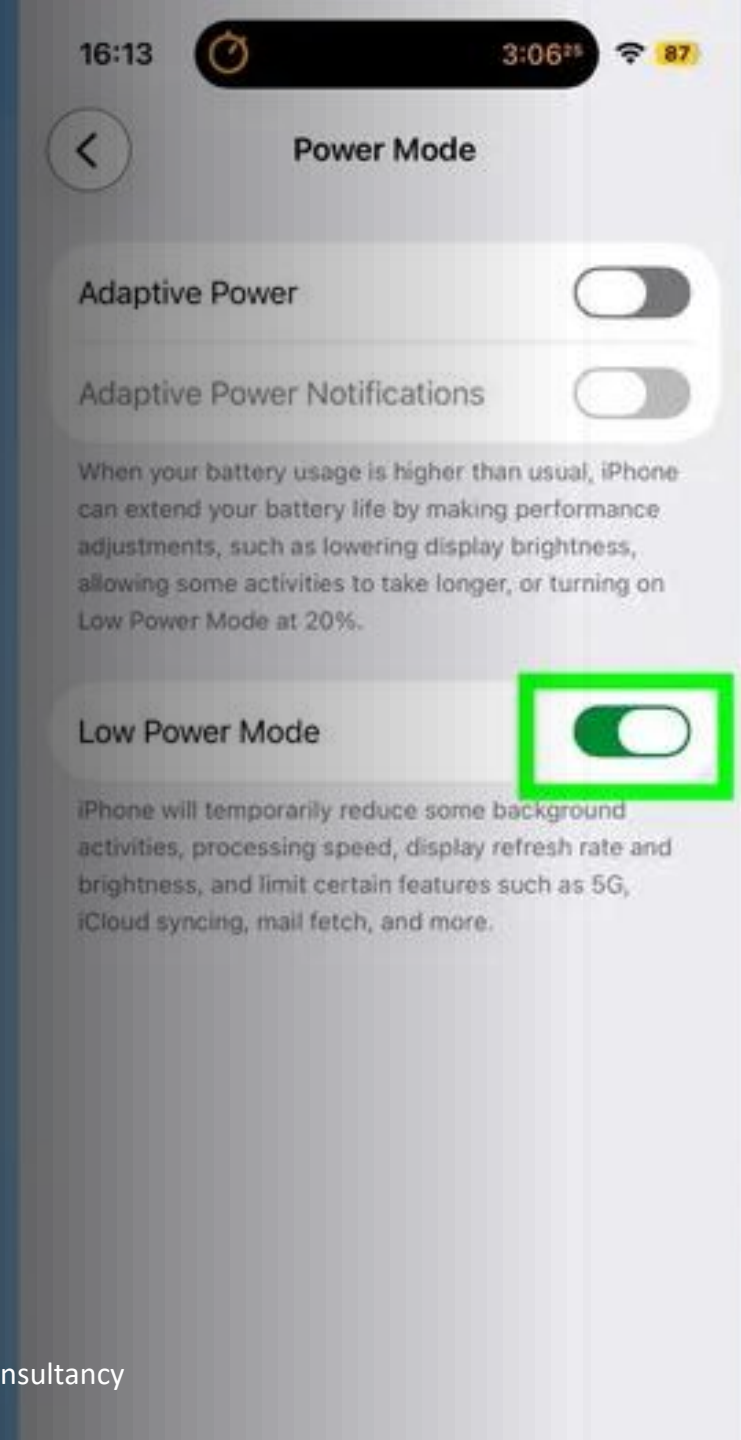
2. Turn off always-on display



- Enable Low Power Mode when battery drops below 20%



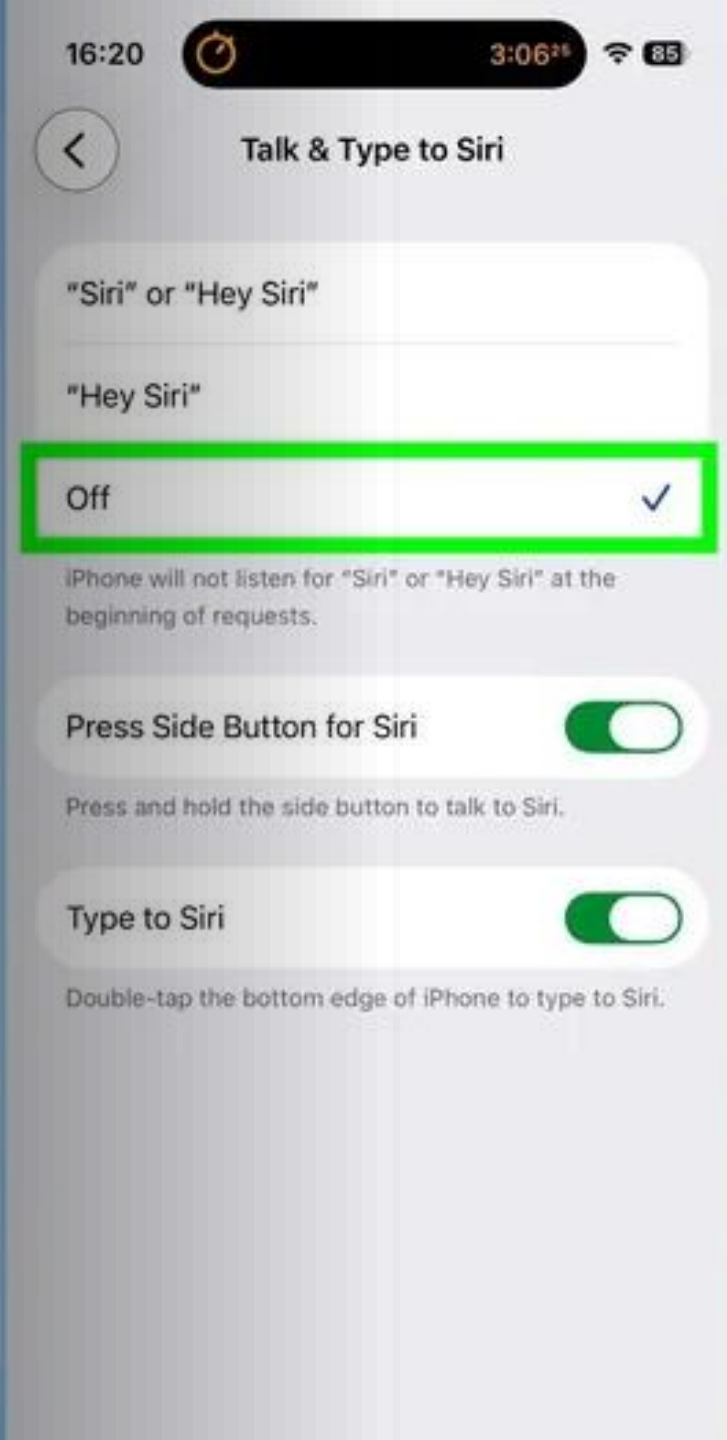
- 4. Disable Background App Refresh



Reduce unnecessary notifications



6. Turn off "Talk to Siri" if you don't use it often



- 7. Use Dark Mode (OLED iPhones only)





INTERNET ARCHIVE

Data from YouGov showing that more than half of adults aged 45 to 64 who were surveyed reported spending five or more hours a day on screens. One-fifth of the respondents estimated that they used their devices seven to eight hours each day.



Research indicates that more than 70% of Australians aged 65 and older now use social media, with Facebook serving as the primary bridge to family, old friends, and community groups.

Overexposure to trivial online content, including endless videos and memes, can negatively influence memory, concentration, and general cognitive wellbeing, with “doom scrolling” linked to psychological distress.



More troubling still is the vulnerability of seniors to online risks. A Benetas study found that 17% of Australians aged 65 and older have already lost money to scams, with 80% expressing concern about the security of their personal information.

APPS